

# 1750 kWe POWER GENERATION PACKAGE

NATURAL GAS POWERED, READY TO INSTALL CONTAINERISED POWER PLANT



Complete package that provides **electrical power**,  
using **natural gas** as a input fuel.  
Designed to work in **high ambient temperature and humidity** -  
tropical environments.

## Economical & Easy

Using a prefabricated, fully equipped and factory tested containerised units makes the on-site installation less time consuming and very convenient.  
Using a natural gas as an input fuel makes the installation economically effective.

### Electrical power plant

**Electrical power** is provided by a **generating set** based on **Cummins Power Generation QSV91G** 18V **natural gas** powered generator.

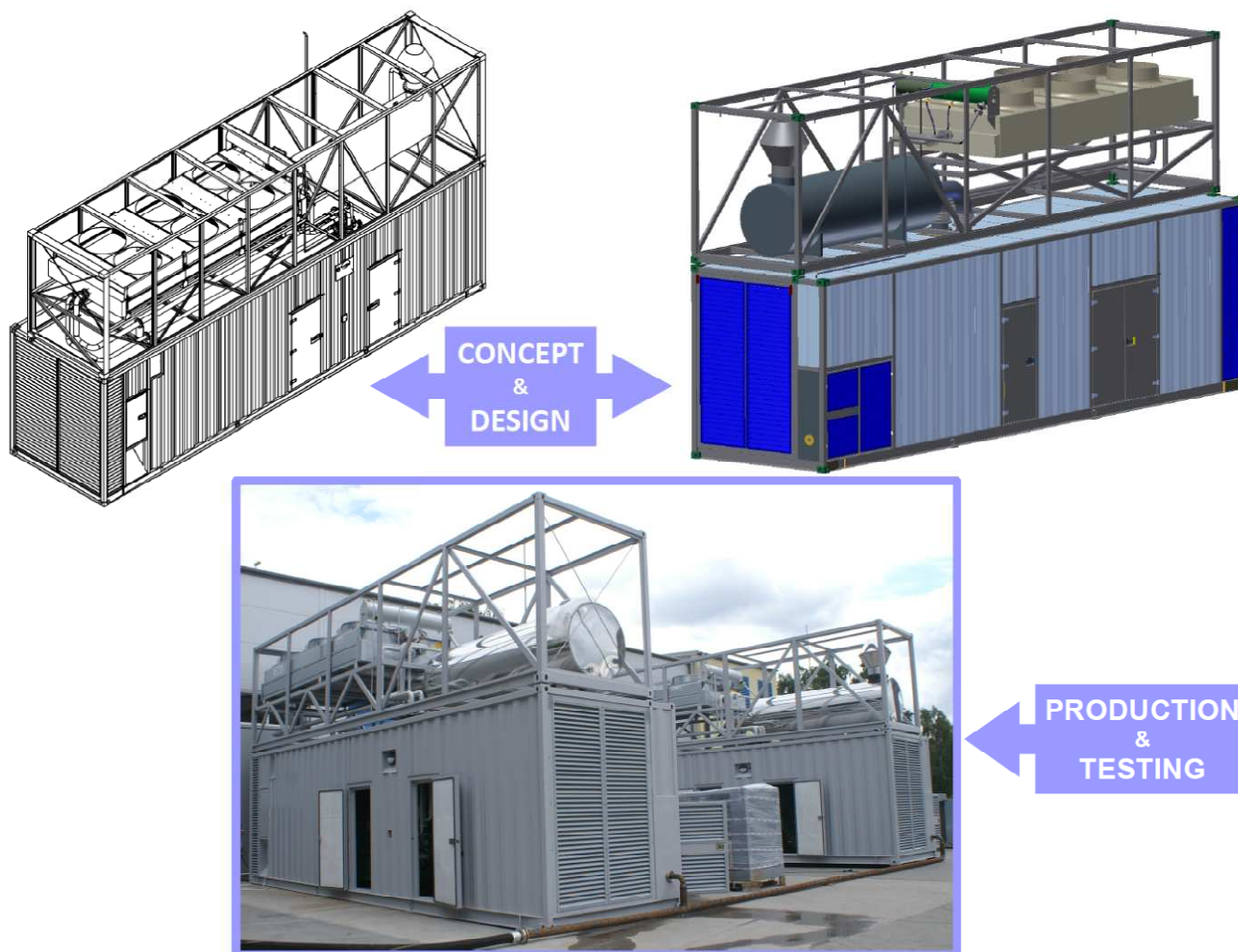
It's a top quality, high efficiency and durable genset designed for continuous power generation. Genset is fully up-fitted with all necessary auxiliaries (ventilation, attenuation, cooling, lighting, controls etc.) which are installed inside a custom designed and made container - expanded and raised 40ft container.

Exhaust silencer and a drycooler (for high ambient temperature) are preinstalled in **Roof Mounted Frame**, which dimensions are standard 40ft ISO container. Connecting roof frame with bottom container makes the installation on-site as easy as possible.



**Packaged genset** combined with **Roof Frame** provides a complete and ready and easy to connect **Power Plant**.

# 1750 kWe POWER GENERATION PACKAGE

NATURAL GAS POWERED, READY TO INSTALL CONTAINERISED POWER PLANT



## Basic technical data of 1750kWe Power Generation Package:

Containerised Power Plant with Roof Mounted Frame		
type / model	HE-KE-CG1750-GZ	
brand / producer	  <b>Power Generation</b>	
electrical power	1750	kW <sub>e</sub>
electrical efficiency	38,0	%
mechanical power	1802	kW <sub>m</sub>
mechanical efficiency	39,2	%
fuel power consumption	4602	kW
total efficiency	77,2	%
natural gas consumption (LCV=34430kJ/kgK)	481	m <sup>3</sup> /h
dimensions of Genset Container - custom	3,5 x 12,2 x 3,0	H x L x W
weight of Genset Container	35 000	kg
dimensions of Roof Mounted Frame - ISO 40ft	2,9 x 12,2 x 2,4	H x L x W
approx. weight of Roof Frame	9 000	kg

contact :  
**P.P.U.H. Horus-Energia Sp. z o.o.**  
 Drobiarska 43 Str.  
 05-070 Sulejówek, Poland  
 Head office: (+48 22) 33 15 310

Fax: (+48 22) 33 15 323  
 email: [poczta@horus-energia.pl](mailto:poczta@horus-energia.pl)  
 www: [www.horus-energia.pl](http://www.horus-energia.pl)