

Wide range of packaged and ready to install **Gensets** providing **Electrical Power** or **Combined Heat and Power** using **Natural gas** as a input fuel.

Reliable, Economical & Convenient

Using a prefabricated, fully equipped and factory tested containerised units makes the on-site installation less time consuming and very convenient. Using a natural gas as an input fuel makes the installation economically effective.

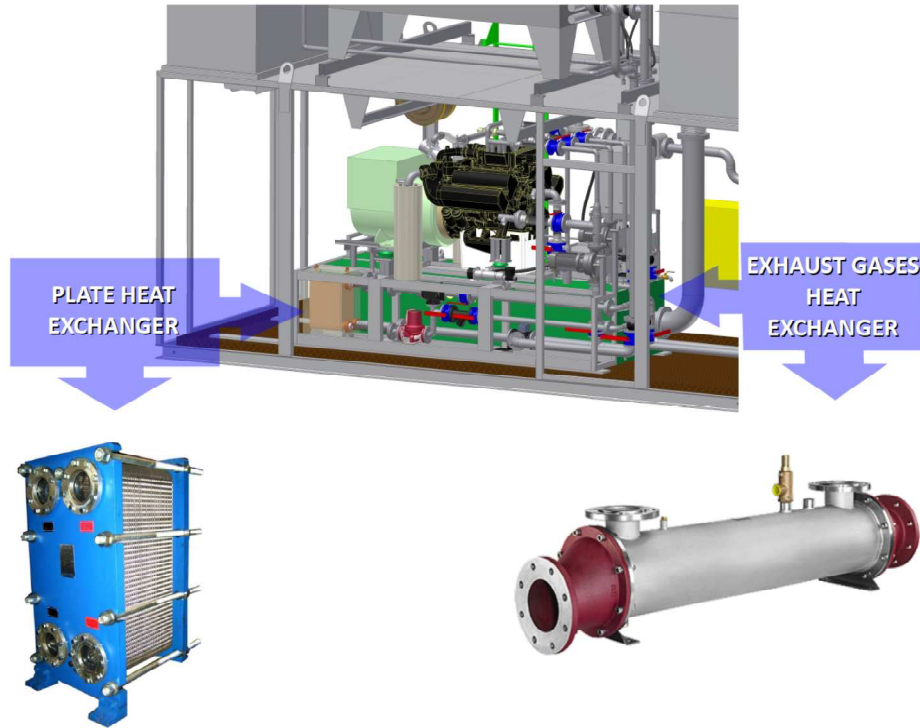
Electrical power plant

Electrical power is provided by a **generating set** based on **MAN** or **LIEBHERR** engines from 4 to 12 cylinders, combined with suitable **alternator**. Gensets are based on modern, top quality components providing satisfactory **efficiencies** and **durability**.

Gensets are **fully up-fitted** with all necessary auxiliaries (ventilation, attenuation, cooling, lighting, controls etc.) which are installed inside and on top of custom designed and made containers in different dimensions suitable for each genset.

Combined Heat and Power plant

Whenever there's need for heat power on-site **gensets** can be optionally **equipped with heat recovery equipment** – both from engine and exhaust gases. This allows to significantly increase overall efficiency by creating a complete **Combined Heat and Power Plant**.



Basic technical data of **natural gas power plants** (range from 40 to 500kW_e):

Genset name	Electrical power [kW]	Heat power [kW] (only CHP version)	Power input in fuel [kW]	Electrical efficiency [%]	Heat efficiency [%] (only CHP version)	natural gas consumption [Nm ³ /h] (LCV = 34,43MJ/m ³)
HE-MG44-GZ	44	63	129	34,1	48,8	13
HE-MG50-GZ	50	79	148	33,8	53,4	15
HE-MG64-GZ	64	89	177	36,2	50,3	19
HE-MG70-GZ	71	109	204	34,6	53,4	21
HE-MG104-GZ	104	138	282	36,7	48,9	29
HE-LG137-GZ	137	155	331	41,4	46,8	35
HE-MG143-GZ	142	207	392	36,3	52,8	41
HE-LG156-GZ	156	177	374	41,7	47,3	39
HE-MG200-GZ	200	291	553	36,1	52,6	58
HE-LG205-GZ	205	234	493	41,6	47,5	52
HE-MG228-GZ	228	331	628	36,3	52,7	66
HE-LG234-GZ	234	266	562	41,6	47,3	59
HE-MG252-GZ	252	321	680	37,1	47,2	71
HE-LG329-GZ	329	372	785	41,9	47,4	82
HE-MG365-GZ	365	489	955	38,2	51,2	100
HE-MG405-GZ	405	513	1 045	38,7	49,1	109
HE-LG497-GZ	497	556	1 178	42,2	47,2	123

contact :
P.P.U.H. Horus-Energia Sp. z o.o.
 Drobiarska 43 Str.
 05-070 Sulejówek, Poland
 Head office: (+48 22) 33 15 310

Fax: (+48 22) 33 15 323
 email: poczta@horus-energia.pl
 www: www.horus-energia.pl