



## GRUPA GWARANT

# S320, S321

Andoria Diesel engines S320, S321 are water cooled diesel engines (cooling by water evaporation or water flow-through). The engines have been developed on the basis of long-term experience in diesel engine production and operation.

### Advantages:

- 4 Stroke diesel engine
- Power range: 18HP - 31.6HP
- Robust construction
- Long life
- Possibility to work under full load for long time with minimum supervision
- Easy operation and maintenance
- Safe operation

The engines are destined for driving turbines, pumps, agriculture machinery,



### **ANDORIA-MOT Sp. z o. o.**

34-120 Andrychów ul. Krakowska 140

tel. +48 33 8762682, +48 33 8762728

fax +48 33 8753560

e-mail: [andoria-mot@andoria-mot.com.pl](mailto:andoria-mot@andoria-mot.com.pl)

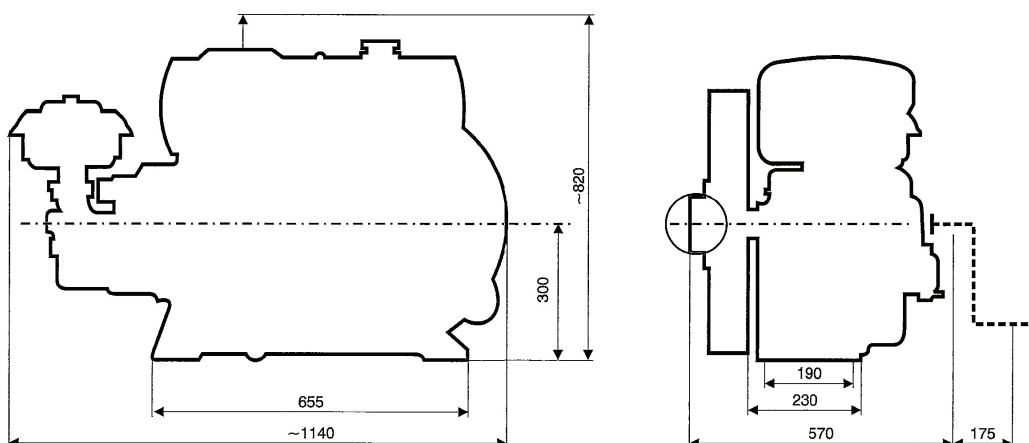
[www.andoria-mot.com.pl](http://www.andoria-mot.com.pl)



## GRUPA GWARANT

### TECHNICAL DATA OF ANDORIA DIESEL ENGINES

Parameters	S320	S321
No. of cylinders	1	1
Bore diameter (mm)	120	135
Piston stroke (mm)	160	160
Displacement (cm <sup>3</sup> )	1810	2290
Compression ratio	17	16
Rated power (kW/HP)	13.2/18	20/27.2
Rated speed (rpm)	1500	1500
Peak torque (Nm)	84.4	142.4
Peak torque speed (rpm)	1200	1100
Minimum idle speed (rpm)	800	800
Spec. fuel cons. at rated power (g/kWh)±5%	258	255
Oil cons. referred to rated power (g/kWh)	1	
Lubrication	Pressure and splash	
Engine oil	Grade CB/SC SAE 15W40	
Weight (kg)	330	



### ANDORIA-MOT Sp. z o. o.

34-120 Andrychów ul. Krakowska 140  
 tel. +48 33 8762682, +48 33 8762728  
 fax +48 33 8753560  
 e-mail: andoria-mot@andoria-mot.com.pl  
[www.andoria-mot.com.pl](http://www.andoria-mot.com.pl)